

## **SONFLON® 7400 ePTFE Gasket Sheet**

SONFLON® 7400 is a multi-directional expanded PTFE gasket sheet material, whose high malleability allows sealing even damaged flange, while its very low relaxation under load guarantees high fitting reliability. Suitable for most chemical applications.

### **Key Features**

- 100% pure virgin PTFE
- Improved creep resistance
- High compressibility and recovery
- High resistance against compressive creep dimension stable
- Universal chemical resistance
- Large temperature range

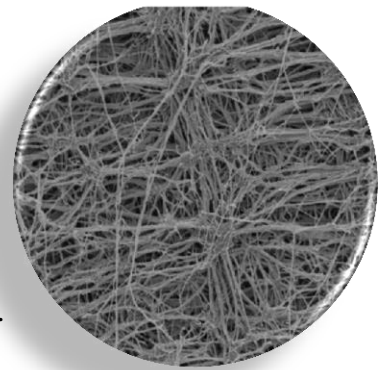


### **Benefits**

- Tight and blow-out safe
- Highest operational safety
- Seals even damaged flanges
- Conforms to the FDA regulations

### **Applications**

- Suitable for all pressure sensitive and stress sensitive connections.
- Suitable for use with even with most aggressive chemicals.
- Non-contaminating-appropriate for all applications demanding highest purity.
- Extremely versatile for flange connections, pressure vessels, chemical reactors and housings of pumps, compressors etc.
- Suitable as hand and manhole gaskets, heat exchangers, venting systems etc.



### **Technical Data (2.0mm)**

Property	Test method	Nominal value
Temperature		-200 °C to +260 °C
Operating Pressure		100 bar
Chemical Resistance		pH 0-14, except molten alkali metals and elemental fluorine.
Sealability	ASTM F37	$6 \times 10^{-4}$ ml/hr
Compressibility	ASTM F36	42 %
Recovery	ASTM F36	5 %
Tensile Strength	ASTM F152	31 MPa

### **Supply Data**

Standard size 1520mm x 1520mm in 0.5 up to 6.0mm thickness, and as ready cut gasket.